



# AUTOMATED ROUTE PLANNING BY PROLOGA

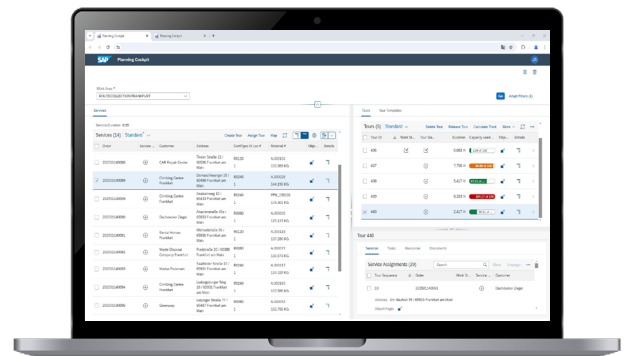


Route planning is a central element in logistics processes, playing a crucial role in efficiency, cost reduction, and sustainability. As customer expectations rise and digitalization accelerates, traditional manual planning struggles to keep up with growing complexity.

With “Automated Route Planning for Secondary Raw Material Collection by PROLOGA”, manual processes are replaced by limitless computerized automation, ensuring seamless and optimized route planning. This solution allows enterprises to automatically plan and control resource use and service delivery, leading to lower planning costs and a reduced CO<sub>2</sub> footprint—all while being closely integrated into core business processes.

By enabling centralized planning across multiple plants,

companies can overcome the challenge of finding specialized planning expertise, optimize vehicle and resource usage, and enhance sustainability efforts through further CO<sub>2</sub> reduction.

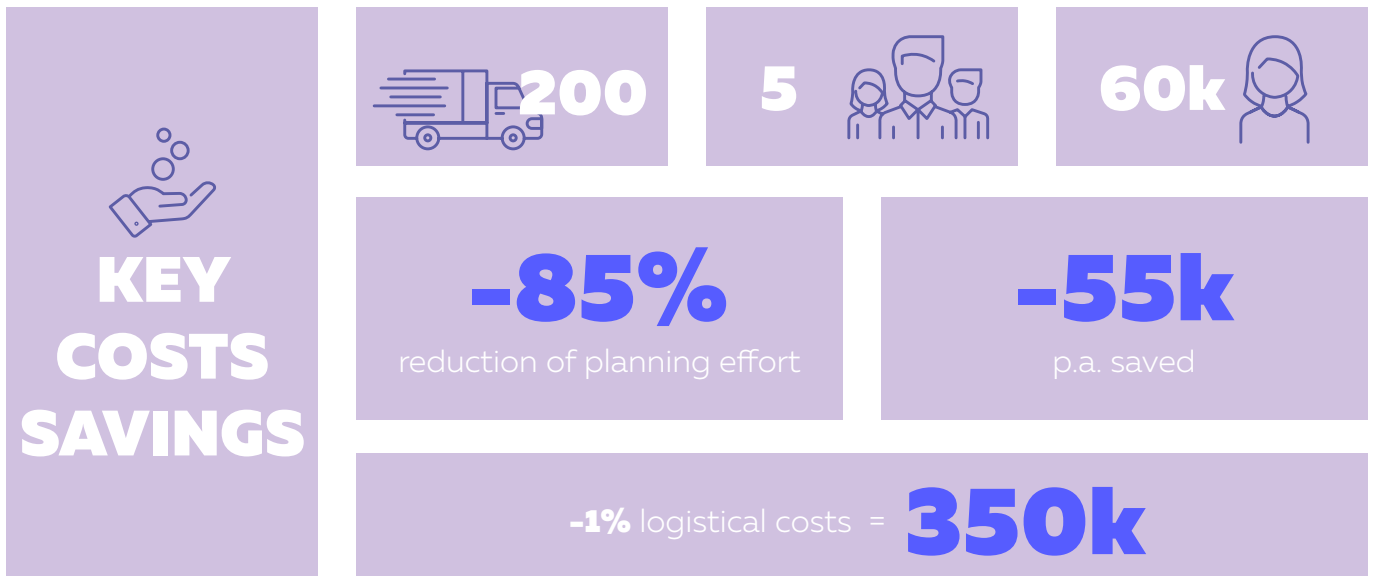
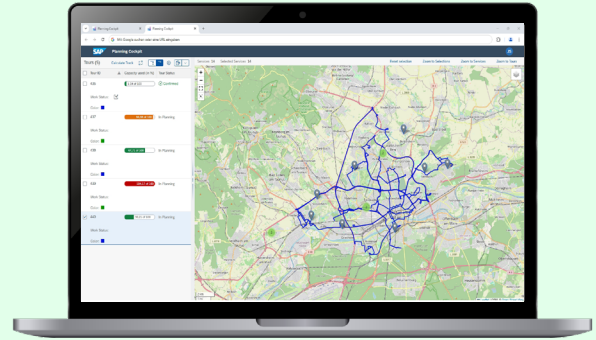


## FEATURES

- 1. Automation**  
Automatically assign service orders to smoothly plan vehicle route.
- 2. Integration**  
Open interface for integration of individual waste management system.
- 3. Reliability**  
Reliable planning automatically created with a minimum resource input
- 4. Scenarios**  
Planning scenarios to automatically compare and define the optimal one.
- 5. Optimization**  
Enable optimal resource utilization..

## ADDITIONAL BENEFITS

- **Automated planning:**  
Replaces manual planning with computerized automation.
- **Time savings:**  
Drastically reduced time and manual effort in planning.
- **Centralization:**  
Centralizes planning and dispatching for the entire enterprise.
- **Cost reduction:**  
Reduced costs through optimized use of your vehicles and staff.
- **Sustainability promotion:**  
CO2 reduction



Experience how PROLOGA's automated route planning can revolutionize your logistics processes! At a time when qualified planners are scarce and legal requirements are becoming increasingly complex, our solution offers an intelligent answer to the challenges of waste management. By integrating important factors such as vehicle availability, geographical data and regulatory requirements, our system optimizes your route planning efficiently and sustainably. Curious to find out more? Read on to find out how you can reduce costs with minimal effort and protect the environment at the same time!

