



Automated Route Planning for Secondary Raw Material Collection by PROLOGA

November 2023



© 2023 PROLOGA GmbH

PROLOGA

Route planning is a central element in logistics processes for waste management companies

"Automated Route Planning for SAP Waste & Recycling" replaces your manual planning with limitless computerized automation

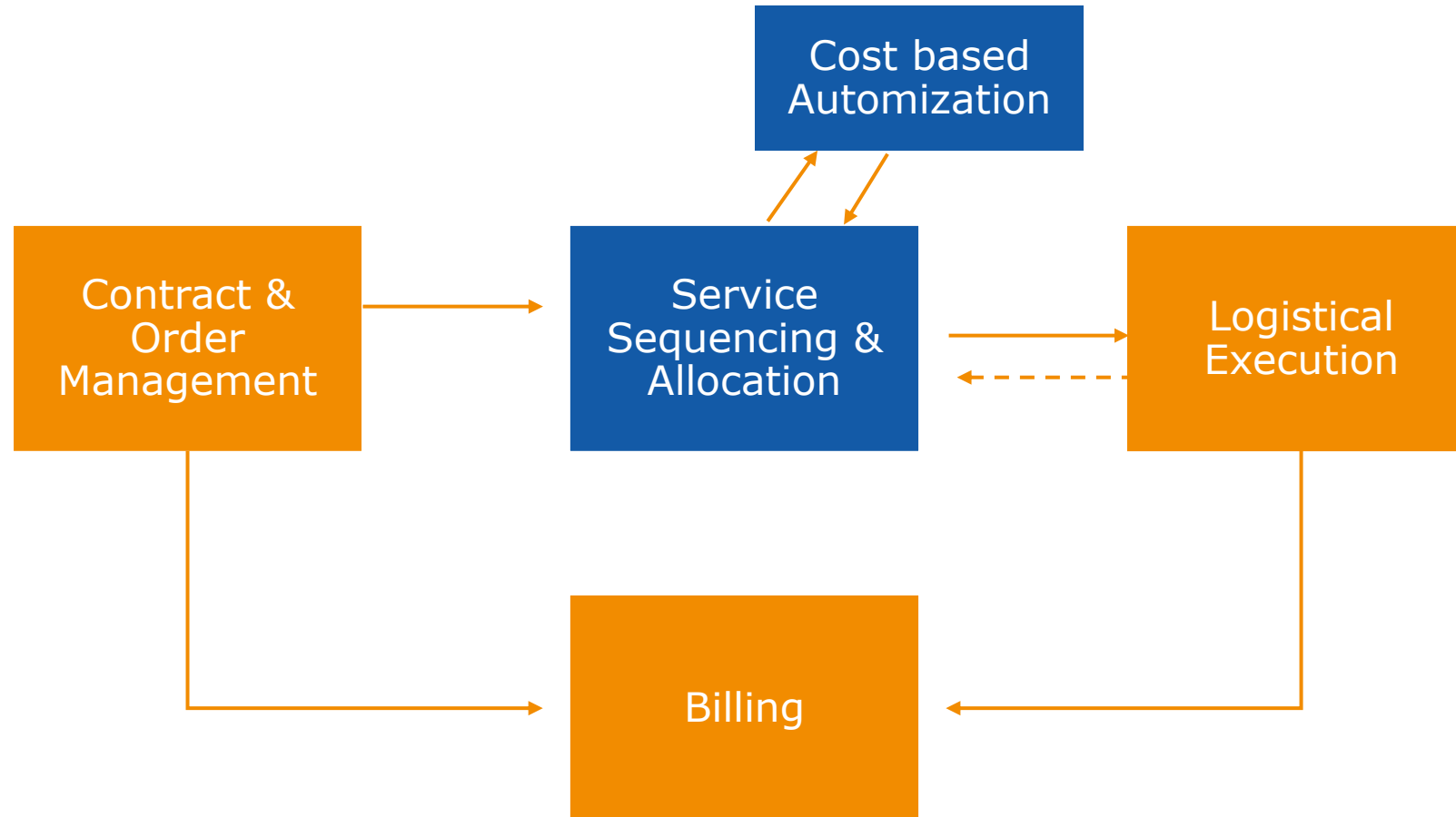
- Automatically plan and control your resource use and service delivery
- Reduce route planning costs
- Reduce CO₂ footprint

...all closely integrated into your enterprise's core processes



Automation

End-to-End Process Flow



Solution

Automated Route Planning for Secondary Raw Material Collection by PROLOGA

AUTOMATION

Automatically assign service orders to smoothly plan vehicle route

INTEGRATION

Seamless integration into SAP S/4HANA for waste and recycling by PROLOGA



RELIABILITY

Reliable planning automatically created with a minimum resource input

FLEXIBILITY

Combine the automated calculation with the special expertise of your employees

OPTIMIZATION

Enable optimal resource utilization

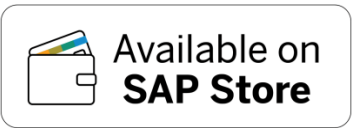
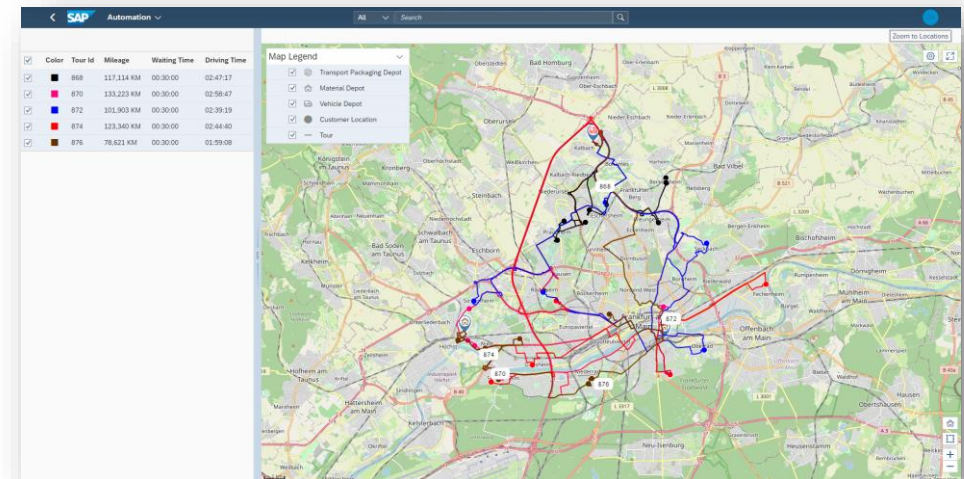
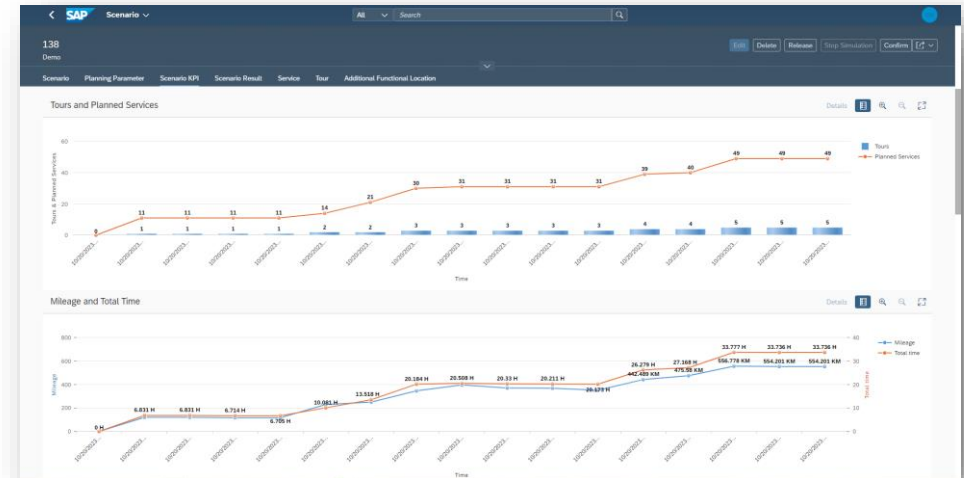


Available on
SAP Store

Product

Automated Route Planning for Secondary Raw Material Collection by PROLOGA

- Automated creation of reliable planning results through minimal use of resources
- Direct and automated allocation of orders to vehicles for improved route planning
- Automated calculation of different planning scenarios to identify the optimal use case scenario
- Direct import of order data from and direct export of planning scenario back into SAP Waste and Recycling (SAP S/4HANA)



Benefits

Automated Route Planning for Secondary Raw Material Collection by PROLOGA



Reduce planning costs through minimal manual effort to process planning



Gain **efficiency** on daily route planning due to fast calculation of best route



Reduce costs through optimized use of vehicles and staff



Save driving time and journey time by planning across multiple plants



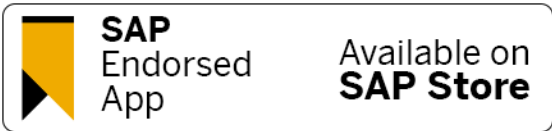
Available on
SAP Store

Automated Route Planning for Secondary Raw Material Collection by PROLOGA

For more information

www.prologa.com

info@prologa.com



No part of this publication may be reproduced or transmitted in any form or for any purpose without the express permission of PROLOGA GmbH. The information contained herein may be changed without prior notice.

Some software products marketed by PROLOGA GmbH and its distributors contain proprietary software components of other software vendors.

SAP and other SAP products and services mentioned herein as well as their respective logos are trademarks or registered trademarks of SAP AG in Germany and in several other countries all over the world. All other product and service names mentioned and associated logos displayed are the trademarks of their respective companies. Data contained in this document serves informational purposes only. National product specifications may vary.

The information in this document is proprietary to PROLOGA. No part of this document may be reproduced, copied, or transmitted in any form or for any purpose without the express prior written permission of PROLOGA GmbH. This document is a preliminary version and not subject to your license agreement or any other agreement with PROLOGA. This document contains only intended strategies, developments, and functionalities of the SAP® product and is not intended to be binding upon SAP AG and/or PROLOGA GmbH to any particular course of business, product strategy, and/or development. Please note that this document is subject to change and may be changed by PROLOGA at any time without notice. PROLOGA assumes no responsibility for errors or omissions in this document. PROLOGA does not warrant the accuracy or completeness of the information, text, graphics, links, or other items contained within this material. This document is provided without a warranty of any kind, either express or implied, including but not limited to the implied warranties of merchantability, fitness for a particular purpose, or non-infringement.

PROLOGA shall have no liability for damages of any kind including without limitation direct, special, indirect, or consequential damages that may result from the use of these materials. This limitation shall not apply in cases of intent or gross negligence.

The statutory liability for personal injury and defective products is not affected. PROLOGA has no control over the information that you may access through the use of hot links contained in these materials and does not endorse your use of third-party Web pages nor provide any warranty whatsoever relating to third-party Web pages.